



Look at the world,  
Start with the Community



# University of Miyazaki, Japan

## School of Nursing, Faculty of Medicine Graduate School of Nursing Science

### Overview & Key Facts about UoM

#### History:

UoM was formed in 2003 through the merger of Miyazaki University (founded in 1949) with Miyazaki Medical College (founded in 1974)

#### UoM by the Numbers:

- ❖ Academic staff: 725
- ❖ Students: 5,414
- ❖ Total land holdings: 7,850,242 m<sup>2</sup>

#### International Relations:

- ❖ 165 students from 21 countries/regions are studying at UoM
- ❖ Academic agreement with 132 institutions of 21 countries/regions

#### Faculties:

- ❖ Faculty of Education
- ❖ Faculty of Medicine
  - School of Medicine
  - **School of Nursing**
- ❖ Faculty of Engineering
- ❖ Faculty of Agriculture
- ❖ Faculty of Regional Innovation

#### Graduate Schools:

- ❖ Graduate School of Education
- ❖ **Graduate School of Nursing Science**
- ❖ Graduate School of Engineering
- ❖ Graduate School of Agriculture
- ❖ Interdisciplinary Graduate School of Medicine and Veterinary Medicine
- ❖ Interdisciplinary Graduate School of Agriculture and Engineering
- ❖ Graduate School of Regional Innovation

#### University Hospital:

- ❖ The 632-bed university hospital is the primary regional medical center of Miyazaki Prefecture
- ❖ Our hospital provides community-based medical care and educational programs focusing on family medicine, primary care and community health



### School of Nursing

#### Department of Fundamental and Community Nursing Science

- Fundamental Nursing
- Community Health Nursing
- Home Care Nursing

#### Department of Maternal / Child Health Nursing and Midwifery

- Maternal Nursing and Midwifery
- Child Health and Pediatric Nursing

#### Department of Integrated Clinical Nursing Science

- Adult-Gerontological Nursing
- Clinical Pharmacology
- Psychiatric and Mental Health Nursing



Kiyotake Campus



School of Nursing

#### Selected first-authored publications in 2022:

- Ohkawa Y, Tanoue H, et al. Physiological and psychological effectiveness of facial massage in women: A randomized crossover trial. *J Int Nurs Res*. (in press)
- Kaneko M. The estimation of a cytomegalovirus immunoglobulin G avidity using the mathematical model. *J Basic Clin Pharm*. 2022;13(127):127.
- Ohkawa Y. Facial massage as a nursing skill: The issue of pressure. *J Med Saf*. 2022;9-16.
- Saori Y, Hiroki T, Amy H, Yoshinori F, Kurumi T. Identify the proportion of locomotive syndrome in a Japanese community. *J Jpn Health Med Assoc*. 2022;31(1):23-9.
- Yoshinaga N, Tanoue H, et al. Naturalistic outcome of nurse-led psychological therapy for mental disorders in routine outpatient care: A retrospective chart review. *Arch Psychiatr Nurs*. 2022;40:43-9.

### Undergraduate Nursing Education



#### Excellent Educational Environment:

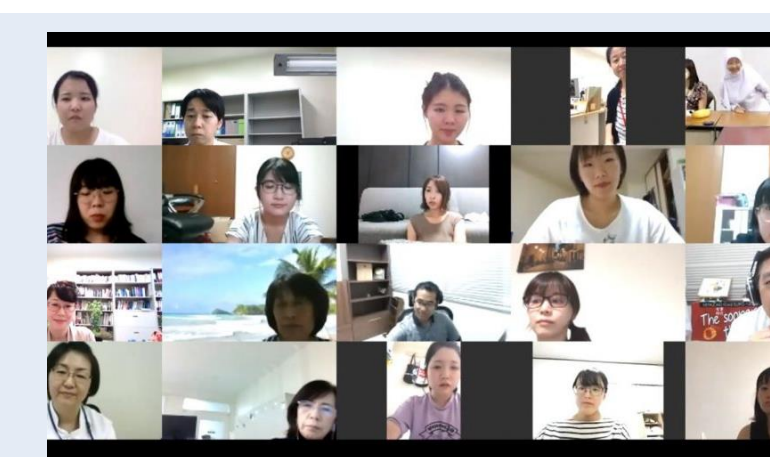
We offer a full range of simulation education on campus and nursing clinical practicum at the university hospital and other local facilities

#### International Perspective Education:

Through mutual student exchange program with Prince of Songkla University, students at both universities have opportunity to learn about healthcare in each country and to experience cultural understanding



@PSU

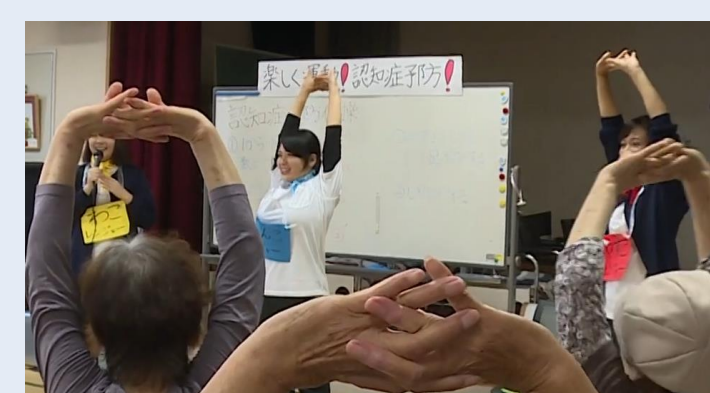


@UoM

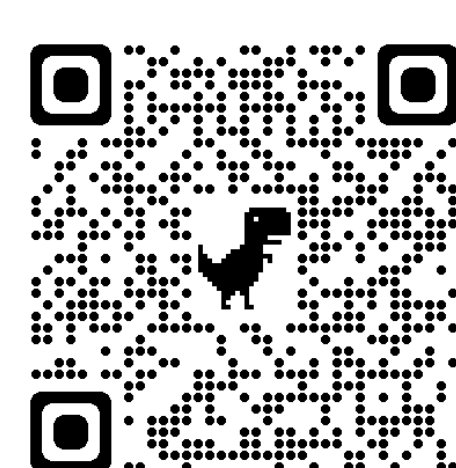
Online Meeting

#### Community-based Education:

UoM students learn about the community life of local residents in order to become nursing professionals who contribute to the local community. UoM students also conduct peer counseling activities at high schools and health classes at the facilities for the elderly



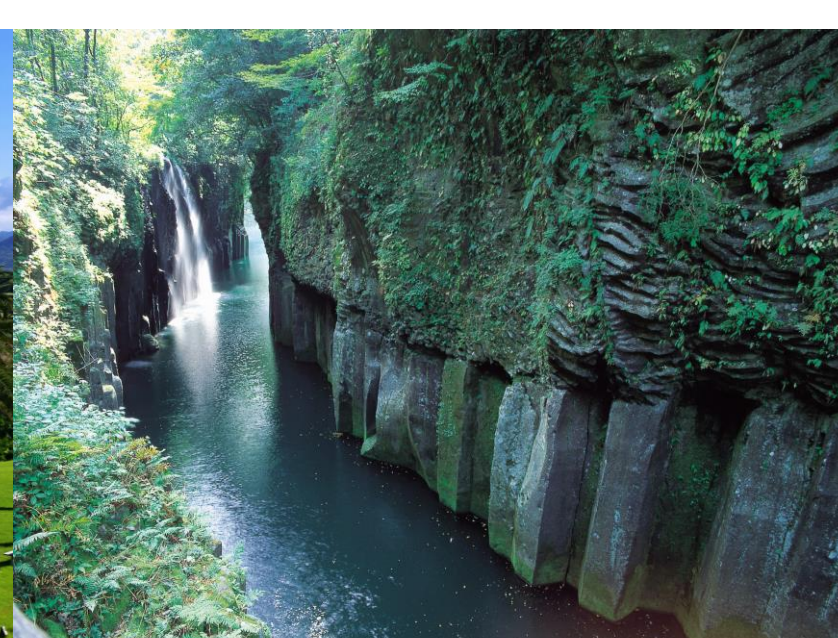
#### Tourist Attractions in Miyazaki Prefecture



Find Out More



Nichinan Coast



Takachiho Gorge



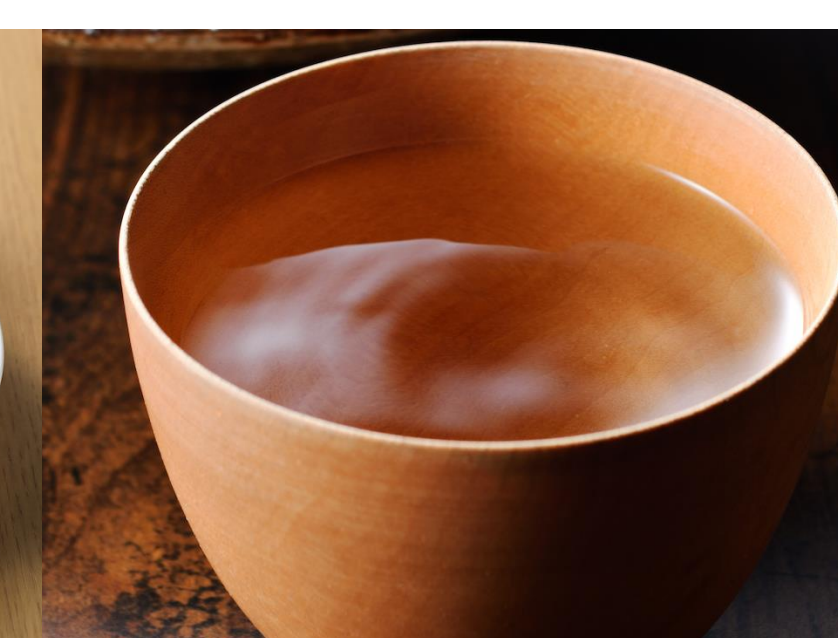
Takachiho Kagura



Miyazaki Beef



Chicken Nanban



Shochu



Miyazaki Mango